



27 Barkers Road, Nether Edge, Sheffield, S7 1SD

Saxton Mee

27 Barkers Road

Nether Edge

Guide Price

£450,000

Guide Price £450,000 - £475,000

A very grand and much larger than average three double bedroom, two bathroom terraced family home offering superb spacious accommodation over four floors and being sold with no onward vendor chain.

This delightful family home has been lovingly maintained and upgraded over the years and briefly comprises;

GROUND FLOOR: Superb imposing entrance hallway with steps down to the cellars beneath offering storage, lounge with bay window and wood burning stove, dining room with wood burning stove, great size kitchen, fitted with a range of base, drawer and wall units with integrated appliances and breakfast bar. **FIRST FLOOR:** Two fabulous size bedrooms, one with built in wardrobes and a spacious bathroom with white bathroom suite comprising of bath with shower above, vanity unit with wash hand basin and lots of storage and a w.c. . **SECOND FLOOR:** Enormous light and airy attic bedroom with a dormer window and two Velux style windows. Here there is an en suite shower room with double walk in shower cubicle, vanity unit with wash hand basin and further storage and w.c.

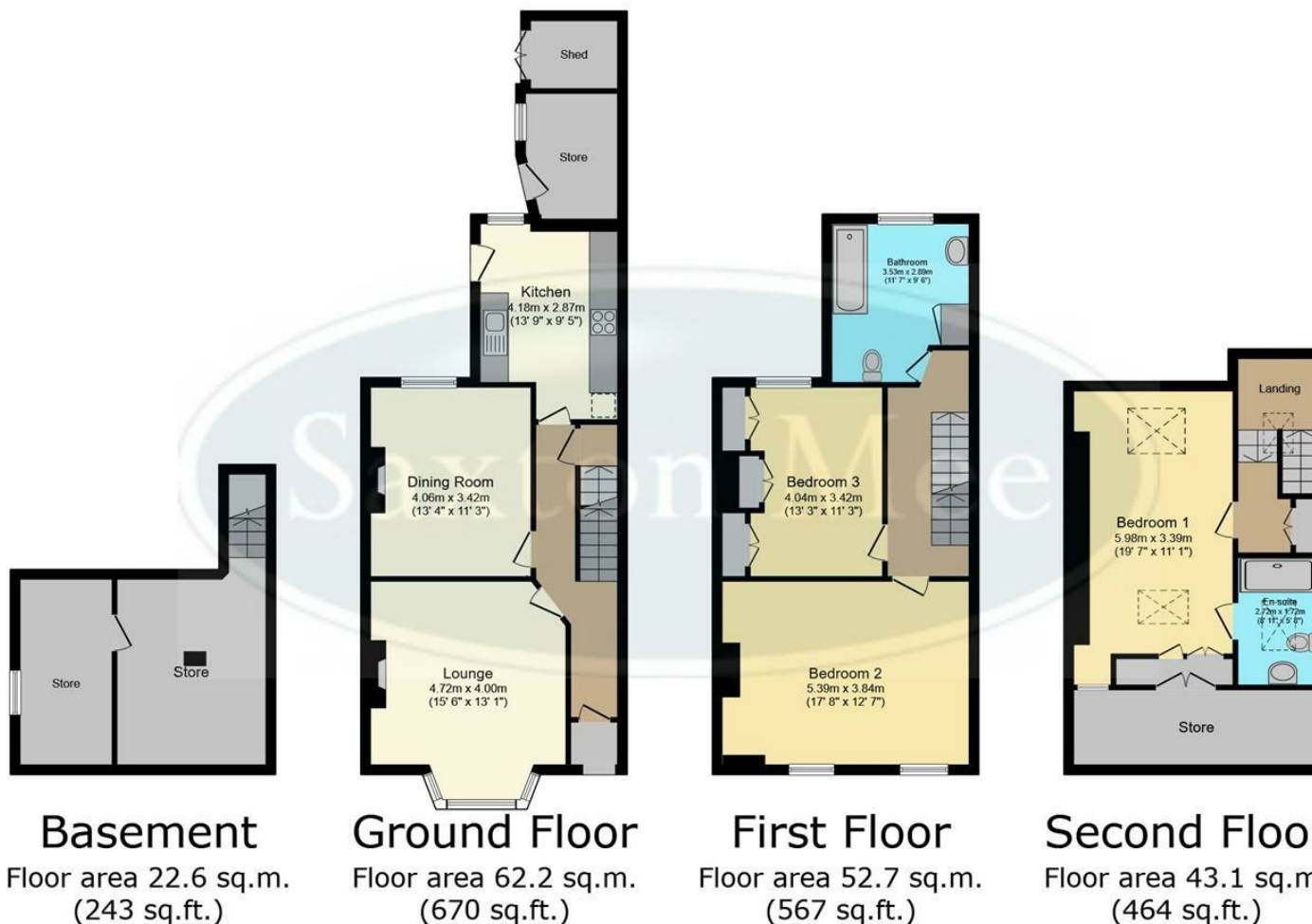
The property sits in an elevated position and to the front of the property is a fore garden with steps up to the front door. To the rear of the property is a garden which is private and enclosed. There is a paved patio area, lawn and a range of mature shrubs and trees. Additional storage provided by an outside store and shed.



- MUCH LARGER THAN AVERAGE
- THREE SPACIOUS BEDROOMS
- TWO BATHROOMS
- TWO RECEPTION ROOMS
- EN SUITE TO MASTER BEDROOM SUITE
- PRIVATE AND ENCLOSED REAR GARDEN
- FABULOUS LOCATION CLOSE TO ALL LOCAL AMENITIES
- EPC E
- TENURE: FREEHOLD COUNCIL TAX BAND C
- VIEWINGS VIA BANNER CROSS BRANCH







TOTAL: 180.6 sq.m. (1,944 sq.ft.)

This floor plan is for illustrative purposes only. It is not drawn to scale. Any measurements, floor areas (including any total floor area), openings and orientations are approximate. No details are guaranteed, they cannot be relied upon for any purpose and do not form any part of any agreement. No liability is taken for any error, omission or misstatement. A party must rely upon its own inspection(s). Powered by www.Propertybox.io

While we endeavour to make our sales particulars fair, accurate and reliable, they are only a general guide to the property and, accordingly, if there is any point, which is of particular importance to you, please contact the relevant office. The Agents have not tested any apparatus, equipment, fittings or services and so cannot verify they are in working order. The buyer is advised to obtain verification. Please note all the measurement details are approximate and should not be relied upon as exact. All plans, floor plans and maps are for guidance purposes only and are not to scale. Under no circumstances should they be relied upon as exact or for use in planning carpets and other such fixtures, fittings or furnishings. YOUR HOME IS AT RISK IF YOU DO NOT KEEP UP REPAYMENTS ON A MORTGAGE OR OTHER LOAN SECURED ON IT. 'A Life Assurance policy may be requested.' 'Written Quotations of credit terms available on request.'

Banner Cross
T: 0114 268 3241
E: bannercross@saxtonmee.co.uk
www.saxtonmee.co.uk

Hathersage
T: 01433 650009
E: hathersage@saxtonmee.co.uk

Bakewell
T: 01629 815307
E: bakewell@saxtonmee.co.uk

Matlock
T: 01629 828250
E: matlock@saxtonmee.co.uk

